

4 Counties CC Championships and Gloucestershire CC League University of Bath 8/12/24

Page 1

How to get to University of Bath

Use BA2 7AY in your satnav or the What3words address for the University of Bath east car park is hood:grant:petty.

*******We are running at the University of Bath NOT Bath Spa University**

From Gloucestershire via the A46 and from the M4 east or west using junction 18 (Southbound) and then the A46

Enter Bath on the A46 then turn right along the A4 at the London Road interchange. After about 2km turn left over Cleveland Bridge following A36 (Bristol and Railway station) for a short stretch. When you reach a roundabout you will see a signpost to the left for Bath University up an unclassified road, Bathwick Hill. Follow the road to the top of the hill then follow signs into the University, then as below.

From Wiltshire and the south via A36

Either follow the A36 into Bath and follow A36 Bristol until you see the University sign and then as above OR (in a light vehicle)... Just after Limpley Stoke on the A36 you will see a brown Tourist Information sign for the American Museum, follow this road up the hill and keep going past the museum entrance until you see the University on the right.

From Bristol following A36 Warminster or from Somerset on the A367 leading to the A36 Warminster

Continue past the city centre on the A36 Warminster until you see the sign for the American Museum and University and turn right up Bathwick Hill to follow top route above.

These all lead to....

Enter the University of Bath down Norwood Avenue. Drive past the Sports Training Village on your right and turn right into the east car park. Bushy Norwood Field is at the far end of the east car park. Follow signs to the event. Club and county tents will be set up on the lefthand side as you enter the field.

What3words address for the University of Bath east car park is hood:grant:petty.

Where to park

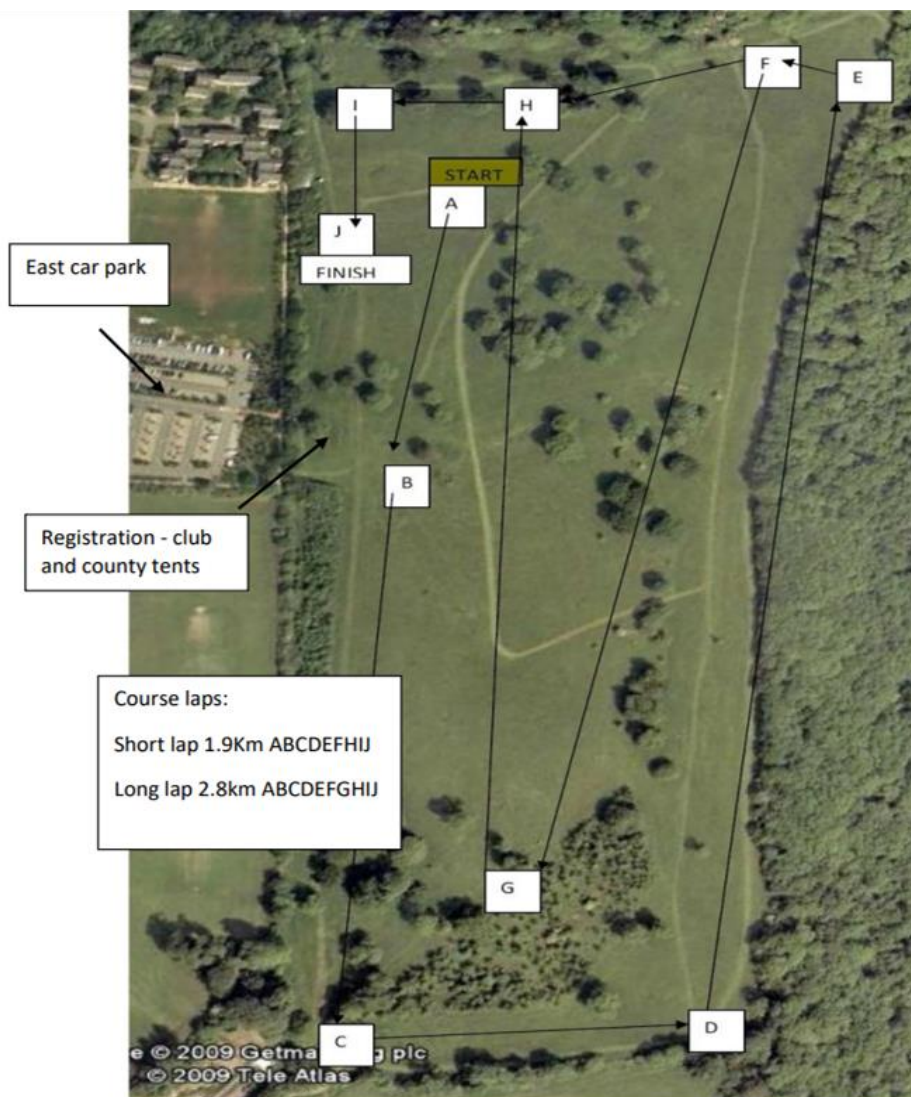
University of Bath east car park. This is a hardstanding car park. Parking charges will apply. Please download the JustPark app before you arrive as paying by phone is the only option.

We are informed that you can pay on the day before you arrive on the JustPark app; the location needed is 187814.

The Gloucestershire League fixture 3 will incorporate the county championships for Avon, Gloucester, Somerset and Wiltshire. Note that initial results will show master age groups for the championships (age on the day) whilst the results for the league will be adjusted after the day to represent the league results (age on the day of the first league meeting).

4 Counties CC Championships and Gloucestershire CC League University of Bath 8/12/24

Page 2



League Fixture 3 and the 4 counties XC Championships

– Sunday 8th December 2024
Bushy Norwood Field, University of Bath

(Courtesy of the National Trust)

This event is hosted by Teambath AC.

Laps:

Short lap 1.9Km
ABCDEFHIJ

Long lap 2.8km
ABCDEFGHJI

Programme

11.00 – U13 Girls (2.8km 1 long lap)

11.20 – U13 Boys (2.8km 1 long lap)

11.40 – U11 Girls (1.9km 1 short lap)

11.55 – U11 Boys (1.9km 1 short lap)

12.10 – U15 Girls and U15 Boys (3.8km 2 short laps)

12.40 – U17 Women and U17 Men (5.7km – 3 short laps)

13.10 – Senior & Masters Women, U20 Women, MV65+ (6.6km – 2 short and 1 long lap)

14.10 – Senior & Masters Men, U20 Men (10.3km – 1 short and 3 long laps) Course

It is good practice to walk the course before racing so arriving 70 to 90 minutes before race start is good. Begin to assemble on the race start line 5 minutes

4 Counties CC Championships and Gloucestershire CC League University of Bath 8/12/24

Page 3

Facilities

There are no indoor changing facilities or showers. There will be two hot drink Cafe2U vans in the east car park. Food can be bought from the University of Bath Lime Tree café and the Sport Training village Sports Cafe.

County championship

If you are qualified to count in the county championships, please pick up a county identification letter at your county tent. These are to be pinned to the back of your running vest.

Medals will be awarded at the county tents about 30 minutes after each race. Please check at your county tent for team selection arrangements for the South West XC Championships at RNAS Merrifield and in the CAU Intercounties XC Championship.

Results

Full results will be posted on the Gloucestershire XC league webpage cross country - Cross Country (athletics4u.co.uk) as soon as possible after the event on Sunday 8th December.

Alex Copping, Race Director – Teambath AC