

## Championship notes

### For the start of each race.

Competitors should assemble in the area behind the start in plenty of time before their race.

Competitors will be allowed into the start area 5 minutes before the beginning of each race. A warning will be given 3 minutes before each race. At this time, competitors should assemble behind their start pen.

With 1 minute to go competitors will be instructed to move into their start pen and line up in race order by the Start Stewards.

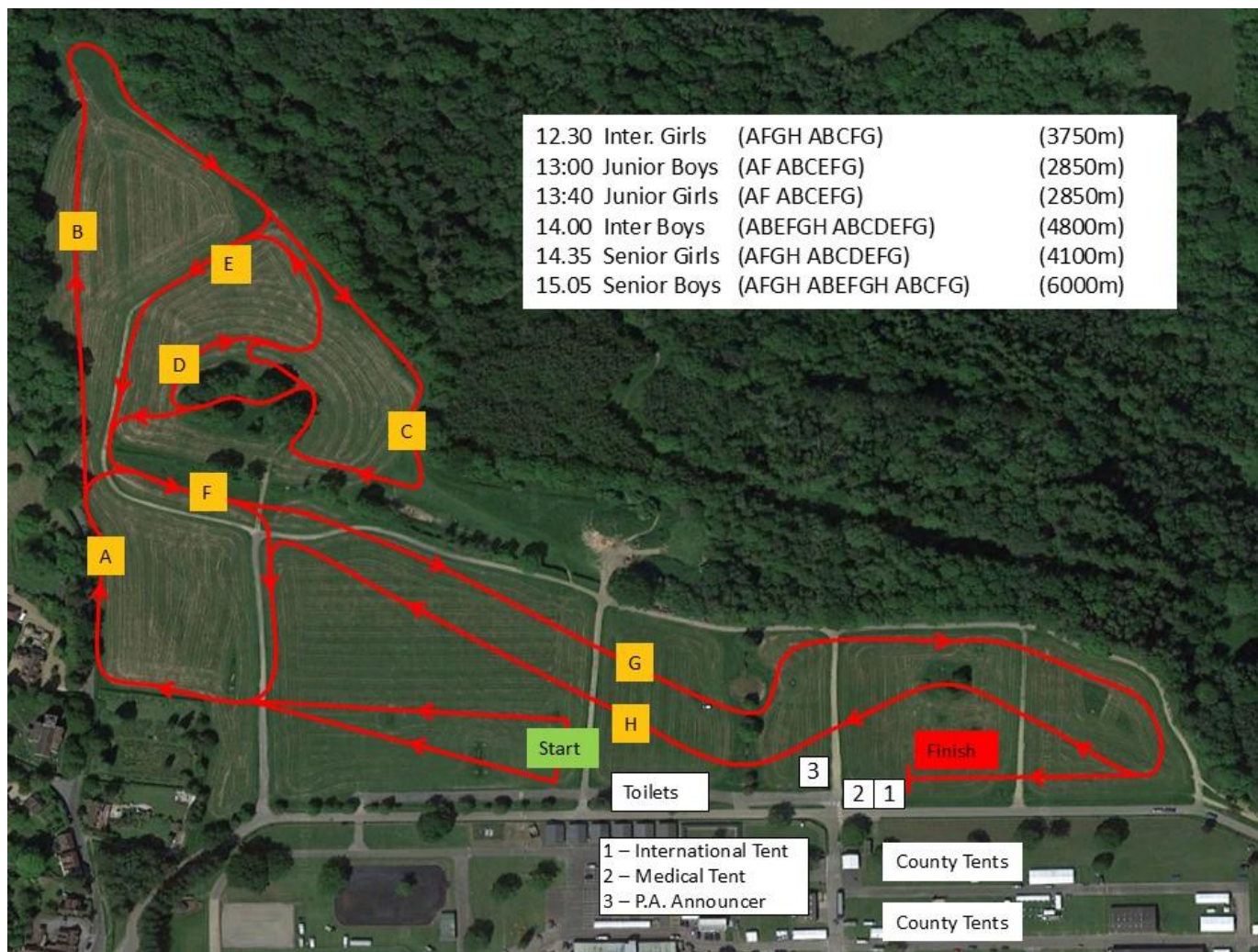
Competitors should listen carefully to any last moment instructions given by the Starter.

The start will be by gun

**Numbers must be securely pinned on the front of the County vest – any mutilation or folding of these numbers may lead to disqualification**

9.00 a.m.	Championship Site Open	
9.30 a.m.	Championship Course Open	
12.00 a.m.	Championship Course should be cleared for a final inspection	
<b>12.30 p.m.</b>	<b>David Minter Intermediate Girls Championship.</b>	<b>3750 m</b>
	Followed by the Individual Presentation	
<b>1.00 p.m.</b>	<b>David Minter Junior Boys Championship.</b>	<b>2850 m</b>
	Followed by the Individual Presentation	
<b>1.30 p.m.</b>	<b>David Minter Junior Girls Championship.</b>	<b>2850 m</b>
	Followed by the Individual Presentation	
<b>2.00 p.m.</b>	<b>David Minter Intermediate Boys Championship.</b>	<b>4800 m</b>
	Followed by the Individual Presentation	
<b>2.35 p.m.</b>	<b>David Minter Senior Girls Championship.</b>	<b>4100 m</b>
	Followed by the Individual Presentation	
<b>3.05 p.m.</b>	<b>David Minter Senior Boys Championship.</b>	<b>6000 m</b>
	Followed by the Individual Presentation	

## Course Map



**Public Car Parking (General Public will enter via the **South gate**, see map below)**

A charge for car parking will be made. This year the price of parking does include a programme. – Cost will be £5 per adult (children free)

### Getting to Ardingly and Parking:

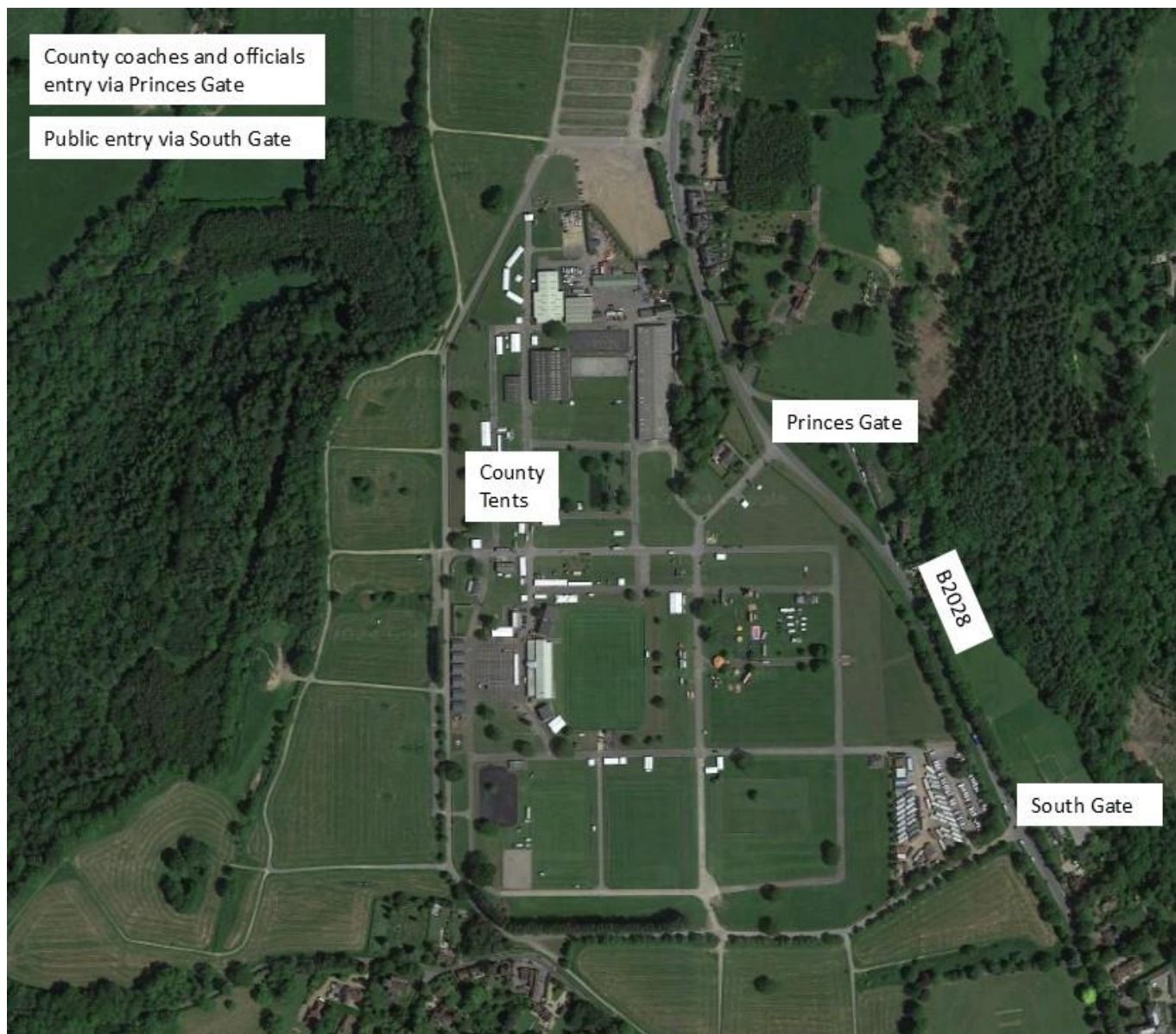
#### Postcodes

South of England Event Centre  
South of England Showground  
Selsfield Road  
Ardingly  
West Sussex

The main entrance to the South of England Event Centre is on the B2028 Selsfield Road close to the centre of Ardingly village. **For Sat Nav use What3word codes as follows**

Members of public South Gate: [///defend.uncouth.drag](https://www.what3words.com/defend.uncouth.drag)

From the M25, exit at junction 7 and follow the M23 towards Brighton. Leave at junction 10 and take the A264 towards East Grinstead. After approximately two miles turn right onto the B2028. After passing through the villages of Turners Hill and Selsfield Common



## Presentations

Individual presentations will be made, as each race is completed.

This does mean that the individual competitor(s) concerned will be presented with their award BEFORE reporting to the International Room.

Team Race presentations will take place as soon as possible after the race result is confirmed.

Announcements will be made as to when a presentation is imminent. The presentation of the Aggregate Team trophies will no longer take place at the end of the Championship, but results will include these scores.

## International Team Selection

The 10 Athletes invited to represent ENGLISH SCHOOLS' A.A. in the SIAB International on Saturday 22<sup>nd</sup> March in Scotland will be selected from the JUNIOR and INTERMEDIATE age groups.

**There is an additional mixed relay race in both the Junior and Intermediate age-group this year, therefore two additional runners will be selected from the Junior and Intermediate boys' and girls' races making it 10 athletes selected to represent England in the SIAB Cross Country.**

The top 12 runners (2 of whom, 11<sup>th</sup> & 12<sup>th</sup> placed finishers will be registered as reserves) will be escorted from the finish by ESAA officials to the International Tent.

Once in the International tent there will be a brief team meeting explaining travel details plus envelopes will be handed out containing all the information required for the international. It is essential that athletes can access a mobile phone in the international tent in order to register their contact details for the International event on 'Google' Forms. Athletes will also collect their international kit.

It is essential that each competitor is accompanied by a parent / adult who can clarify arrangements for the international with the International Team Managers as there are only a few days in which to finalise arrangements for the International.

**Race Results:**

By using the link below, you will be able to locate race results as soon as these are posted.

<https://frsys.uk/esaa>